

ARCHITECTURAL FACADES

FOREVER ▲ STONE



Residential, Commercial and Restoration

Architectural Elements Including, Balustrades • Columns • Capitals • Entry Piers • Moldings
Window & Wall Trims • Window Sills • Keystones • Cornices • Lintels • Belly Bands • Wainscoting • Wall Caps
Pool & Edge Copings • Stair Treads Pavers and Fireplace Mantels



1-800-346-0826

ArchitecturalFacades.com

Award Winning Architectural Elements



Entrance Facade to Architectural Facades Unlimited in Gilroy, California.

Cover Image: Balustrade, Columns, Lintels, Wall Trims, Keystones, Stair Treads, Entry Piers and Pier Caps.



Architectural Facades Unlimited

600 East Luchessa Avenue ■ Gilroy, California

1-408-846-5350 ■ 1-800-346-0826

BROCHURE IX

Since 1986 Architectural Facades Unlimited has been creating the most outstanding solid and lightweight Architectural Cast Stone elements for residential homes, restoration projects and commercial properties throughout the nation.

AFU's skilled staff and production team consistently create highly intricate designs and fabricate a beautiful product of unsurpassed quality, strength and durability. We work alongside architects, engineers, designers and contractors so that we may help facilitate your project requirements. Architectural Facades Unlimited will strive to meet your desired specifications and vision by lending our expertise and craftsmanship.

DIRECTORY

- 4 Columns
- 10 Balustrades
- 16 Landscape Elements - Hardscape
 - Pool & Edge Copings, Floor Fountains, Pavers,*
 - Stair Treads, Planters, and Wall Caps*
- 23 Architectural Elements
- 24 Moldings
 - Window, Door, & Wall Trims*
- 30 Mantels
- 36 Commercial Projects
 - Custom & Restoration*

Columns



Corinthian Colonnade, Eve Lintel & Corbel Details, Corner Quoins, Balustrade, Window & Wall Trims, Wall Veneer, Wainscoting, Pool Coping, Pavers and Stair Treads.



Tuscan Column Colonnade.

Architectural Facades offers six standard and custom designed columns: Tuscan Segmented, Tuscan, Ionic/Fluted, Corinthian/Fluted, Rope/Twisted, Pilaster/Square. All our columns are created with the finest lightweight materials.



Segmented Square Column with Eagle Corinthian Capital



Custom Ancient Roman Column



Tuscan Fluted Column



Square Panel Column

Columns



Tuscan Segmented Columns, Lintel, Wall Trim, Stair Tread, Paver Veneer Entry Piers.

Create an ambiance of classical old world beauty.





Columns

This is a contemporary application of curtain glass windows framed inside and out with Architectural Facades Lightweight Sandstone Columns.



Interior View



Balustrades

Set your property
apart from all others.



Balustrades



Balustrade System Style II with Custom Baluster. French Patterned Wall Veneer, Door Molding, Window Sill, Floor Paver and Stair Tread.



Archway, Pilaster, Corbels, Lintel, Balustrade Style II, Edge Coping, and Stair Treads in our Sage Mist.



Balustrade Style IX, and Tuscan Columns.

The balustrade elements have been designed to be interchangeable, assuring your individual preferences.



Style IX

Baluster Styles



Style I

Style II

Style III

Style IV

Style V

Style VI

Style VII

Style VIII



Balustrade System Style II, Pier and Wall Caps, Wall Trim, Tuscan Columns and Stair Tread.



Historic Addition and Restoration Project. Style II Balustrade with Custom Georgian Columns, Wall Caps and Stackable Piers. in Paint Grade Finish.



Balustrade Style II, Stair Tread, Tuscan Column, Lintel, Window and Wall Trim.



Balustrade System Style II in Travertine Finish with Alternating Wrought Iron Spindles.

Piers bring a distinct aesthetic element to the balustrade system while also providing structural strength and stability.



Landscape Elements

Hardscape

Be creative with your outdoor living space.

Landscape Elements



Round Banded Planters and Stair Treads.



Arabesque Floor Fountain, and Columns.



Wall Caps, Fountain Bowl and Pavers.



Wall & Pier Caps and Wall & Base Trims.



Radius Molding & Flat Wall Paver Veneer, Double Sided Pool Coping, Tiered Fountain Bowl.



Planter and Wall Caps.



Columns, Moldings, Lintels, Wall Caps, Pool & Edge Coping, Corner Quoins, Pavers, Stair Treads and Planters.



Portico Fluted Column and Arch Molding.



Lintel Veneer Trim, Columns, Wall Caps, Pavers, and Stair Treads.

Landscape Elements



Create the perfect outdoor living space with your distinct vision.

Corinthian Colonnade, Lintel & Eave Corbel Details, Corner Quoins, Balustrade, Window & Wall Trims, Wainscoting, Spheres, Wall & Fountain Cap, Base Trim, Stair Treads and Mantel.

Tuscan Colonnade, Balustrade, Window & Wall Trims, Pier Caps and Fountain.

Landscape Elements



Ornamental Fence Piers.



Entry Pier and Wall Caps.



Stair Treads, Wall Caps, Balustrade System Style II, Window Trims and Columns.



Segmented Entry Pier.



Mail Box Pier.



Stair Treads, Pavers and Balustrade System Style II.



Segmented Entry & Fence Piers, Spheres and Wall Caps.

Architectural Details



Aristotle Wall Mask



Zeus Wall Mask



Plato Wall Mask



Aria Planter



Sphere



Image Represents Architectural Facades Columns, Lintels, Door and Wall Trims, Keystones, Stair Treads, Pier Caps, and Balustrade System.

Moldings

Window, Door & Wall Trims

Enhance your architectural details, rooms, windows, and entrances by delineating spaces with our extensive selection of Cornices, Lintels, Corbels, Keystones, Door & Window Trim, Window Sills, Corner Quoins, Belly Bands, Wainscoting and Moldings.

Moldings
Window, Door & Wall Trims



Entry Door Molding, Keystone and Plinths.



Interior Window Molding, Window Sill, Pilaster Legs and Wall Veneer.



Arched Molding, Keystone, and Pilaster Columns.



Window Sills, Moldings, Stair Treads, Wall Caps and Entry Pier.



Window Molding, Tuscan Columns with Corinthian Capital, Balustrade Style II and Roofline Molding, Stair Tread, Wainscoting Wall Veneer and Corner Quoins.



Radius Door Moldings, Window Sills, and Thresholds.

Moldings

Window, Door & Wall Trims



Custom Decorative Pediment Arch Molding, and Segmented Pilasters in our Sandstone Finish.



Custom Entry Arch with Keystone and Finial, Window Sill, Window Trim with Finials, Corner Quoins, Planters and Balustrade System Style II.



Arched Entry Panel Molding and Trim with Keystone supported by Square Panel Columns in our Sandstone Finish.



Window Molding, Segmented Wall Paver Veneer, Wainscoting, running Window Sill, and Tuscan Column.



Wall Trim, Keystone, Wall Paver Veneer, Edge Coping and Balustrade System Style I.



Archway, Pilaster, Stair Treads, Corbels, Lintel, Edge Coping, and Balustrade System Style II.



Decorative Open Wall Panel, Segmented Gothic Arch Entry Door and Window Trim.

Mantels

Architectural Facades Fireplace Mantels set the perfect ambiance for your living space.



Grande Mantel, Facia, Hearth and Columns.



Stone Wall Surround in Grey Flannel and Black Granite in our Sandstone Finish.

Mantels



Tuscan Echo Mantel from "Create Your Own Mantel Collection", Fascia, Hearth, Wall Panel and Wall Molding in Travertine Finish.



Mediterranean Custom Wall Mantel, Facia, Hearth, Moldings, Wall Veneer, Arches, and Columns in Travertine Finish.



Vivaldi from "The Euro-Mediterranean Collection", Fascia and Hearth in Sandstone Finish.



Sirah from "The Bolection Collection", Plinths, Fascia and Hearth.



Tavares from "The Bolection Collection", Fascia and Hearth.



Normandy Mantel, Over Mantel, Fascia and Hearth in our Travertine Finish.



Mozart from "Create Your Own Mantel Collection", Fascia and Hearth.



Botticelli from "The Euro-Mediterranean Collection", in our Sandstone Finish.



Esquire from "The Xavier Collection" and Hearth.



Monet from "The Create Your Own Mantel Collection", Fascia and Hearth.



Tuscana from "Create Your Own Mantel Collection", Fascia and Hearth.



Aristocrat from "Xavier Collection", Fascia and Hearth in our Travertine Finish.



French Shell from "The Xavier Collection" in our Paint Grade Finish (Faux Finished).

Mantels

Commercial

Custom & Restoration Projects



Redwood City Courthouse Plaza Fountain Bowls, Fountain, Columns, Pilasters, Signage, Lintels, and Cornices, in our Sandstone Finish.

Sherman Clay

Building Restoration

San Francisco, California

Architectural Precast Association Awards Architectural Facades Unlimited in two categories, GFRC Excellence and Craftsmanship

JURY COMMENTS:

Fantastically detailed renovation of a classical building using GFRC. The castings matched the original details and were able to do so without any noticeable transitions. The elegance of the original design is restored to this treasure of a building.

RESTORATION CASE STUDY

Sherman Clay & Co. Building was built in 1906. Exterior facade consists of ornamental terra cotta spandrels, jambs, sills, fluted and tapered columns, Doric capitals, ornamental shell parapet castings. In most cases using the original materials would make restoration costs prohibitive. The use of GFRC for restoration allows for the historical conservation of our nation's landmarks at an achievable cost without sacrificing the original architectural facade.



Water intrusion at the top floor gutter created severe corrosion to the structural steel members and to the terra-cotta anchors weakening the structure. Architectural Facades selected for removal, several of the original terra-cotta castings that were then repaired and readied for the mold making process. Polyurethane rubber molds were made over the high quality terra-cotta castings - columns, capital & base, rosettes, shell and facial ornaments, dentals, egg and dart moldings to replicate to exact detail of original terra-cotta castings.



The GFRC system reduces one-third of original terra-cotta weight. Lightweight GFRC castings are anchored to a new metal stud steel framing system designed by Architectural Facades. The anchorage design for GFRC units are flexible allowing for thermal and seismic movement.



The challenge in this project was to produce castings with the exact shape, color, and finish of the original terra-cotta. Architectural Facades Unlimited created the perfect GFRC color match and mix design. The contractor applied a glaze and seal coating over the GFRC units. The final appearance of the GFRC and terra-cotta is indistinguishable.

GREEN, SUSTAINABLE, AND RESILIENT

RESPONSIBLE - Using Lehigh White Portland Limestone Cement (PLC) is an environmentally responsible choice. Production of this earth friendly cement generates about 10% less CO2 than other Portland Cements, while still delivering the consistency, versatility and performance Lehigh customers, like Architectural Facades Unlimited, come to expect.

GREEN BUILDING - Lehigh White Portland Cement allows for the production of a more sustainable concrete product for owners and designers who want a green option in architectural concrete products.

RESILIENT - Functional resilience incorporates many aspects of building design and construction, and while a very broad concept, designs that include provisions for functional resilience will tend to be more durable, robust, disaster resistant, have longer life expectancies, and be more readily adapted for reuse and even re-purposing.

Beckwith

Restoration Project
Los Gatos, California

Beckwith Building after the 1989 Earthquake from 1893 photographs.

Lightweight GFRC enabled the owner to restore this building. Current codes and seismic restrictions would have made restoration of this project cost prohibitive if restored in original materials.



Pulling the mold from the pattern created by our in-house craftsmen.



Installation of Architectural Facades GFRC sandstone facade.



The Ritz Carlton

Restoration Project
San Francisco, California

APA Award of Excellence

JURY COMMENTS:

This project exemplifies how best to successfully restore a portion of the facade of an existing architectural gem. Not only did the various elements blend with their respective adjacent materials, the systems used showed that a near perfect solution can be achieved. Control from beginning to the end shows a mastery of this type of work. Well done! The level of detail of the new castings matches the level of quality of the original stonework.



Image represents Architectural Facades GFRC precast restoration of twelve story Oriel Bay and other elements recreated from 19th century photographs.

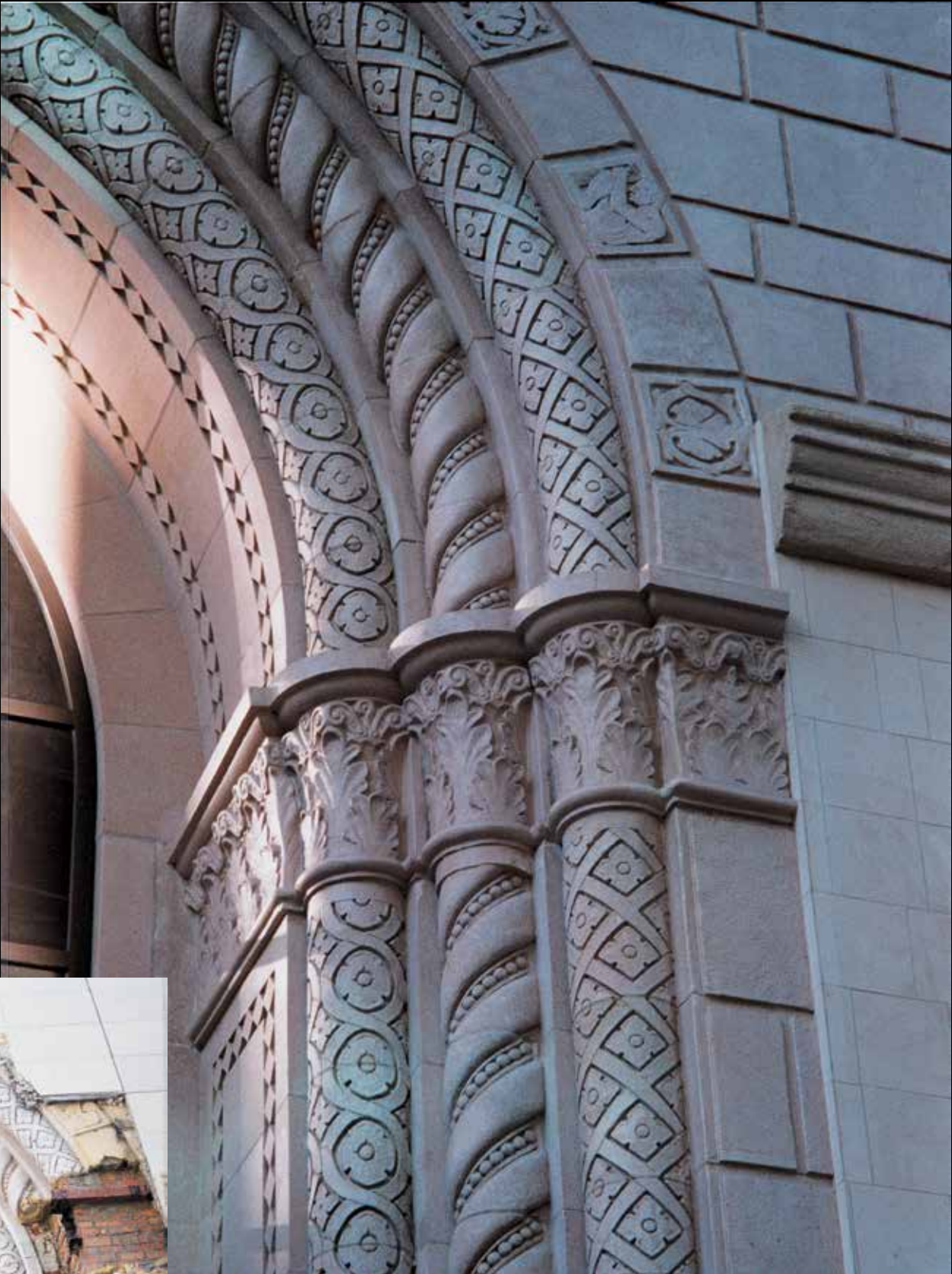


St. Mary's
College
Custom Project
Moraga, California

Saint Mary's gave Architectural Facades the opportunity to re-create many special ornamental details which included cast stone screen inlays, pediments, window frames and ornamental segmented pilasters.



Courtyard, Entry Doors, Window Details - Ornamental Pediments, Balusters and Columns.



Central Building
Restoration Project
Oakland, California

Arastradero District

Custom Project
Palo Alto, California



Courtyard Fountain, Chiseled Blockface Wall Veneer and Running Wall Trim.



Lytton Building

Custom Project
Palo Alto, California



Archway supported by Custom Columns and Wainscoting in GFRC Sandstone.



Buddhist Temple

Custom Project
San Jose, California



Thuyen Nguyen-Phuc the Artist and Architect of the Chua Duc Vien Buddhist Temple brought his sculptures created for this project to Architectural Facades Unlimited for mold fabrication and casting. These pieces were cast in a lightweight smooth finish and used throughout the temple.



USC School of Cinematic Arts

Custom Project

Los Angeles, California

APA Winner for Excellence and Craftsmanship



Corner Quoins, Lintels, Entry Moldings, Window Trims & Sills, Belly Band Trims, and Columns



Signage, Lintels, Arch Entry & Door Moldings, Columns, Column Trims, Window Trims & Sills, Corner Quoins, Belly Bands, and Ornamental Wall Details.



Award Winning Architectural Cast Stone Elements Since 1986.

Available in Standard, Lightweight GFRC, GRG, and Exclusive LCS Stone.

Colors & Finishes



Color may vary from above; orders will be provided with a color sample to sign.
© 2014 Architectural Facades Unlimited, Inc

- Paint-grade finish comes ready to be prepped and painted.
- Sandstone, travertine, rustic and custom finishes.
- Custom color available with surcharge.

Green Building of America Award

Made in America



Architectural Facades Unlimited

600 East Luchessa Avenue
Gilroy, California

1-408-846-5350 • 1-800-346-0826

BROCHURE IX

ARCHITECTURalfacades.com • 47



Lightweight Thirty Foot Columns, Cornice, Trellis Beams, Crown Molding and Running Wall Trim in Sandstone Finish.



Lightweight Panel System, Cornice, Moldings
with Segmented Contemporary Columns.



ARCHITECTURAL FACADES

FOREVER STONE

1-800-346-0826
ArchitecturalFacades.com

A.I.A. Associate  A.P.A. Certified
Made in the USA